

## Independent Wall Lining - Acoustic Optimum (DM-9)

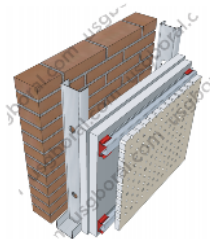
### Description



Masonry : Brickwall or Lightweight concrete 100mm - 150mm

Frames : JayaBMS Track, JayaBMS Stud, JayaBMS Furring Channel and JayaBMS Direct Fixed Clips

Board : 2 layers of Jayaboard Sheetrock 12mm + 1 layer of Jayabell 12mm (1 side)

Cavity : > 70mm



STUD SIZE (mm)		MAXIMUM HEIGHT (mm) Non-Load Bearing Studs			 FIRE RATING (minutes)	 ACOUSTIC RATING (STC)	
Width	Thickness	@600mm centres	@400mm centres	Grade BS 5234		Without Insulation	Insulation Mineral Wool 50mm
51	0.4	2350	2550	Heavy Duty	X + 30	± 49	± 62
	0.5	2450	2700				
64	0.4	2600	2950		X + 30	± 50	± 63
	0.5	2800	3200				
	0.7	3100	3650				
76	0.4	2900	3400		X + 30	± 51	± 63
	0.5	3150	3700				
	0.7	3600	4300				
92	0.5	3750	4400	X + 30	± 52	± 63	
	0.7	4300	4950				