

Independent Wall Lining - Acoustic Standard (DM-6)

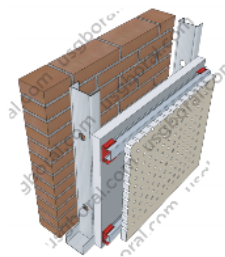
Description



Masonry : Brickwall or Lightweight concrete 100mm - 150mm

Frames : JayaBMS Track, JayaBMS Stud, JayaBMS Furring Channel and JayaBMS Direct Fixed Clips

Board : 1 layer of Jayaboard Sheetrock 12mm + 1 layer of Jayabell 12mm (1 side)

Cavity : 25mm ~ 70mm



STUD SIZE (mm)		MAXIMUM HEIGHT (mm) Non-Load Bearing Studs			 FIRE RATING (minutes)	 ACOUSTIC RATING (STC)	
Width	Thickness	@600mm centres	@400mm centres	Grade BS 5234		Without Insulation	Insulation Mineral Wool 50mm
51	0.4	2300	2600	Medium Duty	X + 15	± 47	± 58
	0.5	2450	2800				
64	0.4	2700	3100		X + 15	± 48	± 59
	0.5	2900	3350				
	0.7	3250	3700				
76	0.4	3100	3550		X + 15	± 48	± 60
	0.5	3300	3800				
	0.7	3700	4250				
92	0.5	3850	4400	X + 15	± 48	± 61	
	0.7	4300	4900				