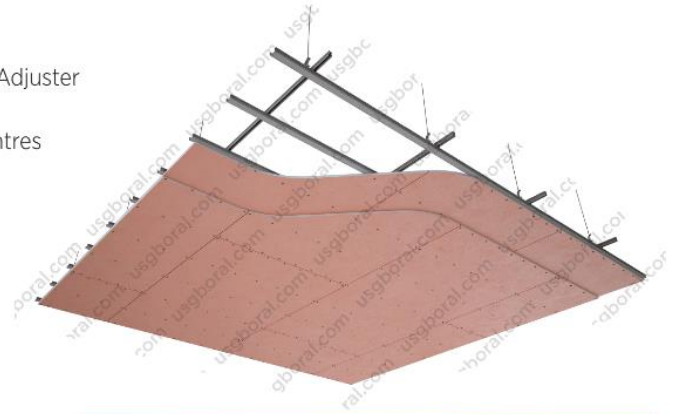
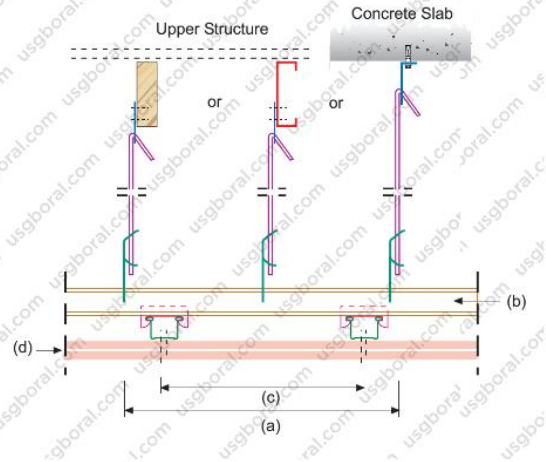


## Fire Rating Ceiling 1 Hour (CS-15)

Frame : JayaBMS Hanger System (Bracket PN 220/221, Clip Adjuster PN 224, Rod PN 226) at 900mm max. centres  
 JayaBMS Top Cross Rail PN 202 at 900mm max. centres  
 JayaBMS Furring PN 205 at 400mm max. centres

Board : 2 layers of USG Boral Firestop 16mm  
 Weight : 28.2 Kg/m<sup>2</sup>

Configuration:



Material		Max frame space (mm)
Suspension Clip PN 224	a	900
Top Cross Rail PN 202	b	900
Furring Channel PN 205	c	400
2 layers of USG Boral Firestop 16mm	d	-

Note:  
 All plasterboard joints shall be staggered between layers.  
 Deflection limit L/360  
 Performance values are for imperforate, jointed systems using only JayaBMS components and installed to the USG Boral Indonesia specification given.